

## Study on Memory & Metabolism

If you are 14-19 years old with type 2 diabetes, we need you for a study on glucose (blood sugar) regulation and memory!

The study involves 2 visits,  
for which you'll receive **\$100**

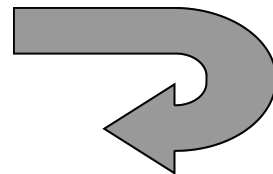
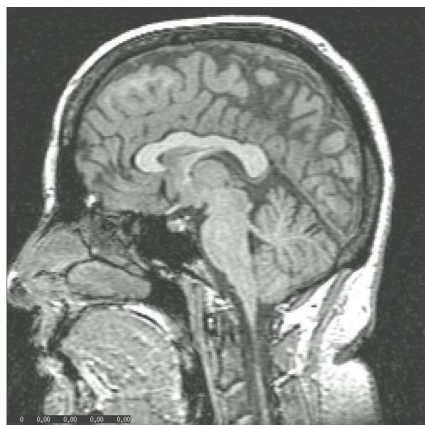
Visit 1: \$20

- ◆ Blood draw
- ◆ Memory Testing

Visit 2: \$80

- ◆ MRI scan of brain
- ◆ Memory Testing

Each visit is approximately 3.5 hours. After your MRI scan, we will give you a CD with pictures of your brain!



**For more information, contact:**  
**Alyssa Arentoft**  
**Research Coordinator**  
**Phone: 212-263-3478**  
**Email: [arenta01@med.nyu.edu](mailto:arenta01@med.nyu.edu)**